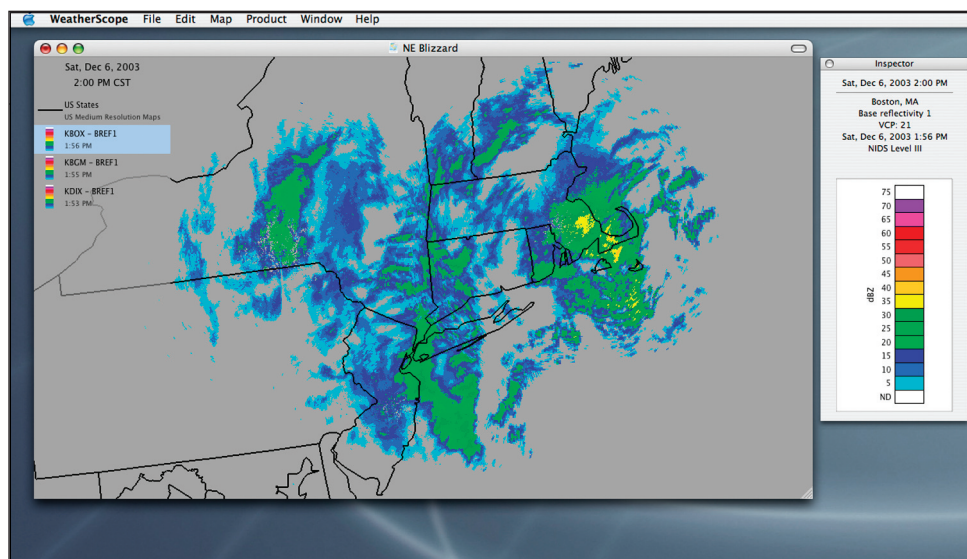


Oklahoma Climatological Survey WeatherScope Software



To aid state agencies, public safety officials, K-12 teachers and students, and other Oklahoma decision makers in viewing weather information in a timely fashion on their personal computers, the Oklahoma Climatological Survey (OCS) has developed a data visualization tool called WeatherScope. WeatherScope is distributed freely for education and other noncommercial use and can be downloaded at <http://sdg.ocs.ou.edu/>. The software operates in both Windows XP and Mac OS X operating systems and requires an accelerated graphics card (now standard in modern personal computers).

Capabilities

WeatherScope can display weather data as maps or time-series graphs. The following features are available in Version 1.1 of WeatherScope:

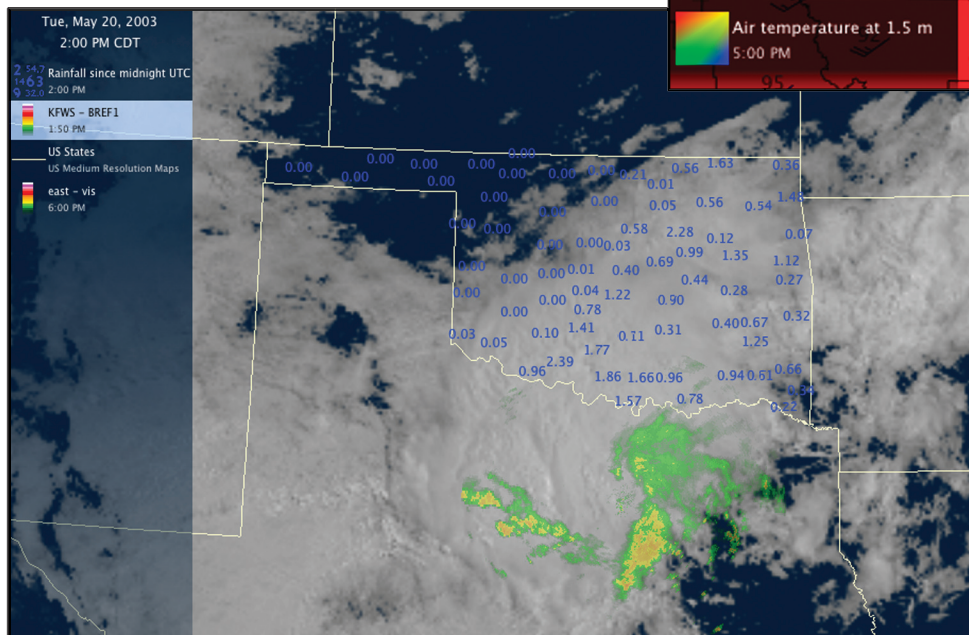
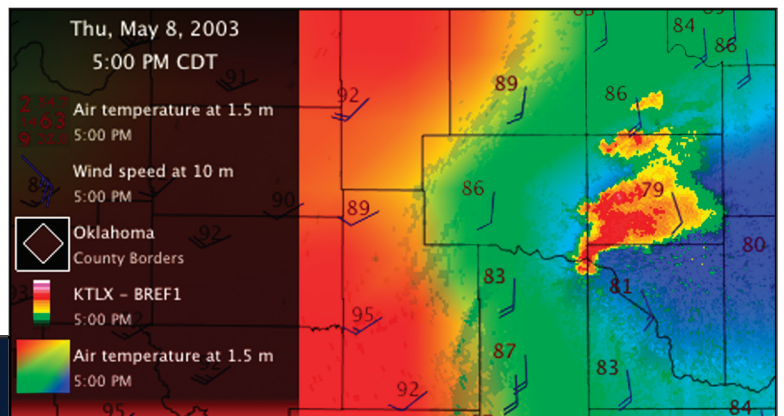
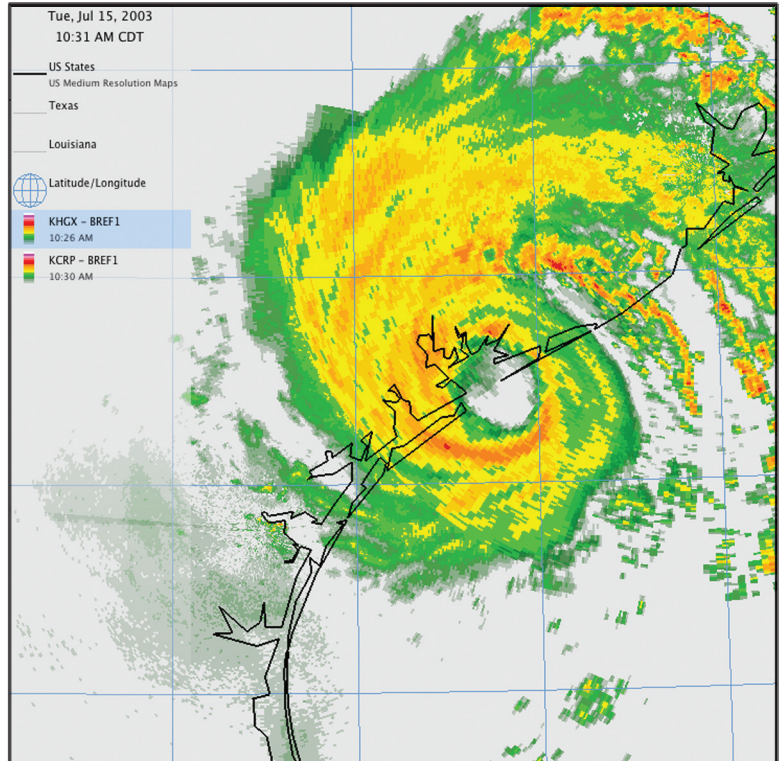
- Maps with single or multiple data plots, line and color contour plots, or vector plots from one or more surface or upper-air observing networks;
- Maps with NEXRAD Level III radar data from one or more radar sites;
- Ability to display maps with various map projections and geographic overlays;
- Zoom, pan/scroll, configure order of data layers, show/hide data layers, and change individual or multiple layer translucency;
- Graphs of data from multiple stations and variables;
- Real-time or archived data;
- Configurable by webmaster or by user via graphical user interface (GUI) or an extensible markup language (XML).

WeatherScope was designed by OCS software engineers to generate visual displays on the customer's computer by directly accessing the "raw" data from a web server. As a result, images are generated "on the fly" and thousands of customized products can be served from a single data file.

Applications

WeatherScope provides an excellent display environment for organizations with minimal resources and customers with diverse needs. The software and its predecessors are used extensively in the following applications:

- Emergency management – preparing for, monitoring, and responding to severe thunderstorms, ice storms, wildfire episodes, floods, and hazardous chemical spills;
- Education – providing unique learning opportunities for K-12 schools, colleges, and universities through the use of real-time environmental data in classroom activities;
- Agricultural management – monitoring insects and disease, scheduling spraying and irrigation, preparing for planting and harvesting, and tracking frost/freeze coverage;
- Scientific research – discovery, analysis, and display; and
- Weather hobbyist activities – personal weather monitoring and forecasting.



For more information, contact:

Oklahoma Climatological Survey
 The University of Oklahoma
 100 East Boyd Street, Suite 1210
 Norman, OK 73019-1012

tel 405.325.2541
 fax 405.325.2550

e-mail: ocs@ou.edu
<http://www.ocs.ou.edu>

Copyright © 2005 Board of Regents of the University of Oklahoma. All Rights Reserved.