

Oklahoma Climatological Survey A Resource for the State of Oklahoma



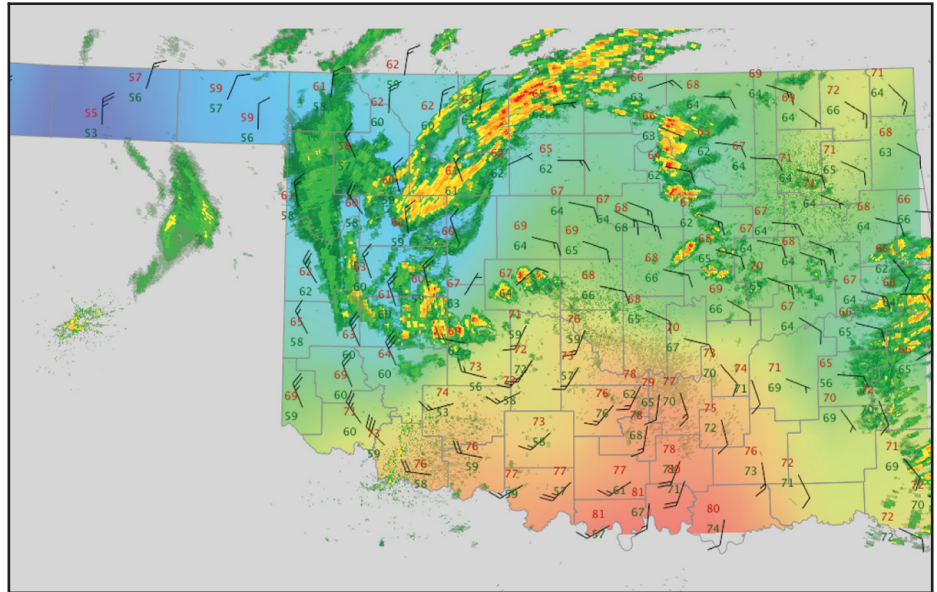
Established in 1980 to provide climatological services to the people of Oklahoma, the Oklahoma Climatological Survey has a legislative mandate to acquire, process, and disseminate climate and weather data and information for use by the state's citizens. The Survey maintains an extensive array of climatological information, serves as the support facility for the State Climatologist, operates the Oklahoma Mesonet, and hosts a wide variety of educational outreach and scientific research projects.

Resources

The Oklahoma Climatological Survey is home to a variety of environmental monitoring and service programs, including the following:

- One of the most active and comprehensive State Climate offices in the nation, and recognized by the American Association of State Climatologists as the official Climate Office for Oklahoma;
- The Oklahoma Mesonet, a world-class network of environmental monitoring stations that was designed and implemented by scientists at the University of Oklahoma and at Oklahoma State University;
- OK-FIRST, an educational outreach and service program for public safety officials who need to access and apply real-time weather information in their decision-making processes;

- EarthStorm, a teacher enhancement program for K-12 science, mathematics, and technology educators across Oklahoma that provides exciting learning activities using meteorology, environmental data, high-quality software, and telecommunications;
- WeatherScope, a cutting-edge data visualization tool for displaying real-time and archived data from various environmental networks; and
- Land-atmosphere interaction research, the basic and applied research infrastructure for a new generation of environmental decision-making products for use by state and local agencies, industry, and private citizens.



Data and Information

The Oklahoma Climatological Survey is one of the primary suppliers of real-time and archived environmental data and information to local, state, and federal agencies within Oklahoma. The following data sources are available:

- Cooperative Observer Network data (from 1892 to present) – the basis of the climate record for Oklahoma, in archived form only;
- Oklahoma Mesonet (from 1994 to present) – a wealth of county-level information for decision makers, in real-time and archived form;

- NEXRAD radar (from 1998 to present) – National Weather Service doppler weather radars, coverage over entire U.S. in real-time and 15 radars covering Oklahoma in archived form;
- National Weather Service text products (from 2002 to present) – forecasts, watches, warnings, advisories, public information statements and other text information from the NWS offices serving Oklahoma, in real-time and archived form; and
- Government publications (from 1896 to present) – printed and digital records of observations and reports for Oklahoma and the nation, including Climatological Data, Storm Reports,

and CD-ROMs from the National Climatic Data Center (NCDC) and other sources.

For more information, contact:

Oklahoma Climatological Survey
 The University of Oklahoma
 120 David L. Boren Blvd., Suite 2900
 Norman, OK 73019-1012

tel 405.325.2541
 fax 405.325.2550

e-mail: ocs@ou.edu
<http://climate.ok.gov>

Copyright © 2009 Board of Regents of the University of Oklahoma. All Rights Reserved.

